

The role of the

METROPOLITAN PLANNING ORGANIZATION (MPO)

To preserve and enhance the quality of life in northwest Florida.

Kandase Lee | *Chief Executive Officer*

We refer to the MPOs as the Transportation Planning Organizations (TPO).



**Federal and
State Law
require a
Metropolitan
Planning
Organization
(MPO) to be
designated...**

...in each urbanized
area with a population
of 50,000 or more.



What is a Metropolitan Planning Organization (MPO)?

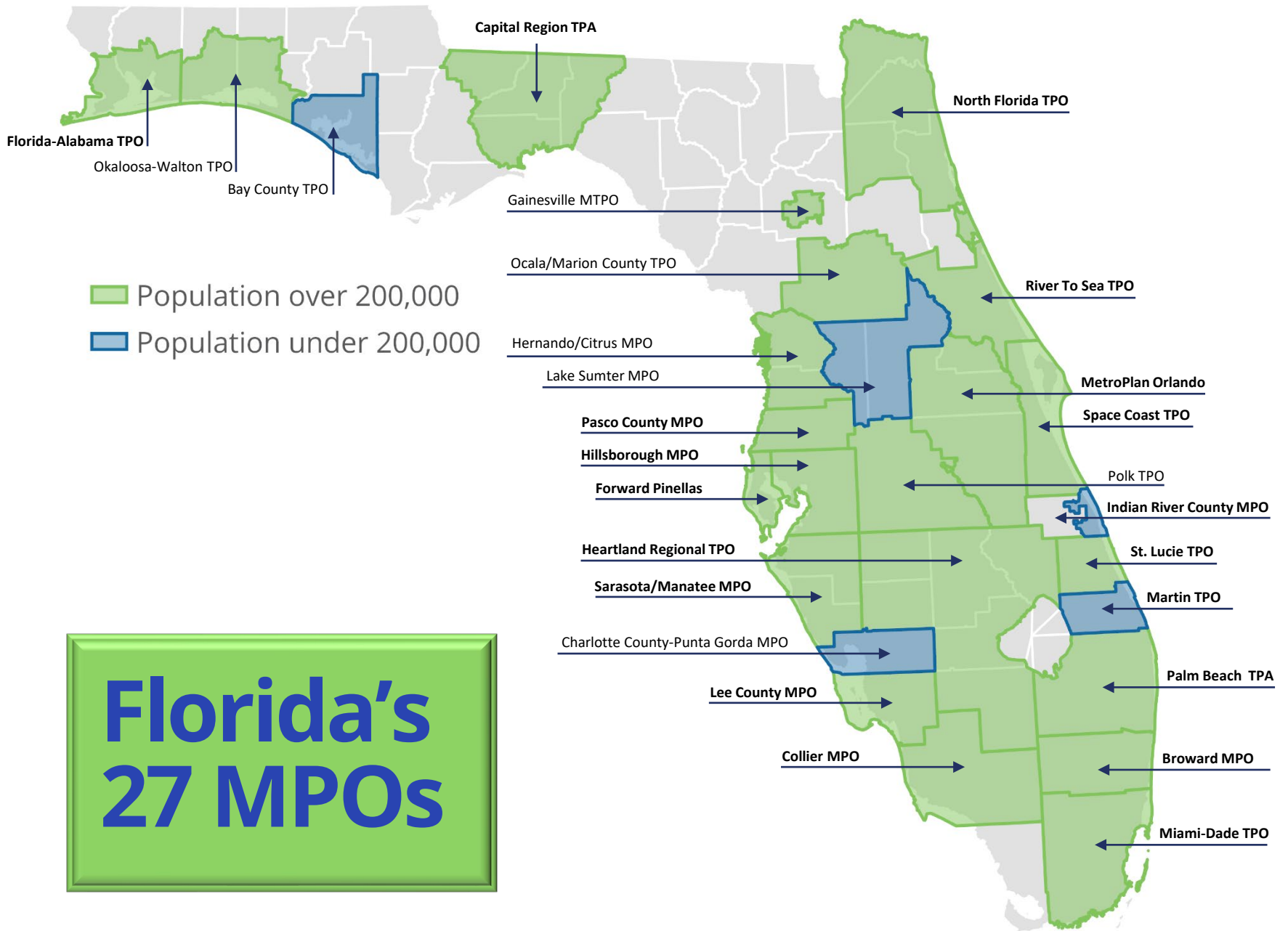
A designated forum for cooperative transportation decision making.



ECRC TPO Planning Areas in West Florida

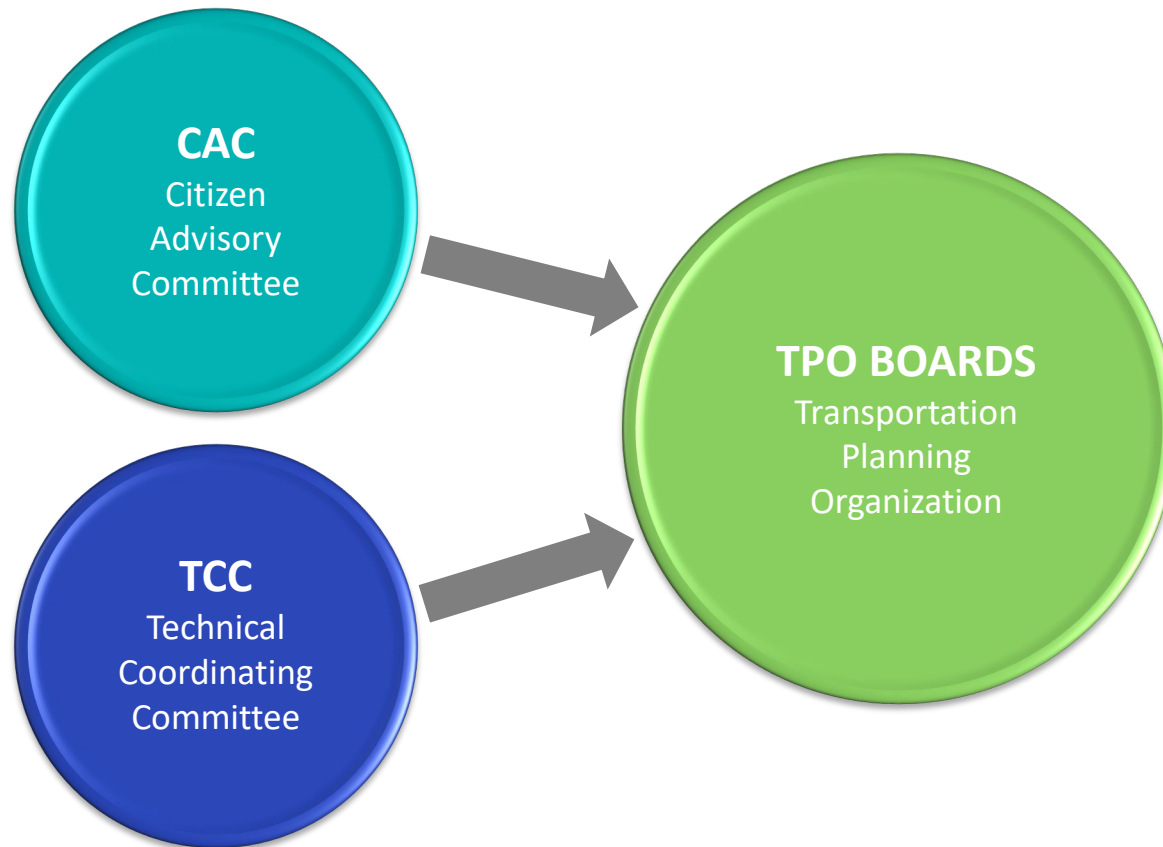
Emerald Coast Regional Council staffs the 3 TPO's across the panhandle, providing planning consistency across the region.





Advisory committees support the TPO:

The Citizen Advisory Committee (CAC) and the Technical Coordinating Committee (TCC) provide recommendations to the Transportation Planning Organization (TPO) Board on agenda items.



Who comprises the TPO Board?

A TPO is governed by a Board of Directors who steer the cities and counties towards a sustainable future.



County Commissioners

5 seats - Escambia
5 seats - Santa Rosa
1 seat - Baldwin

City Council Members

5 seats - Pensacola
1 seat - Milton
1 seat - Gulf Breeze
1 seat - Orange Beach



County Commissioners

4 seats - Okaloosa
3 seats - Walton

City Council Members

3 seats - Crestview
2 seats - Destin
2 seats - Ft. Walton
Beach
1 seat - DeFuniak Springs
1 seat - Freeport
1 seat - Mary Esther
1 seat - Niceville
1 seat - Valparaiso



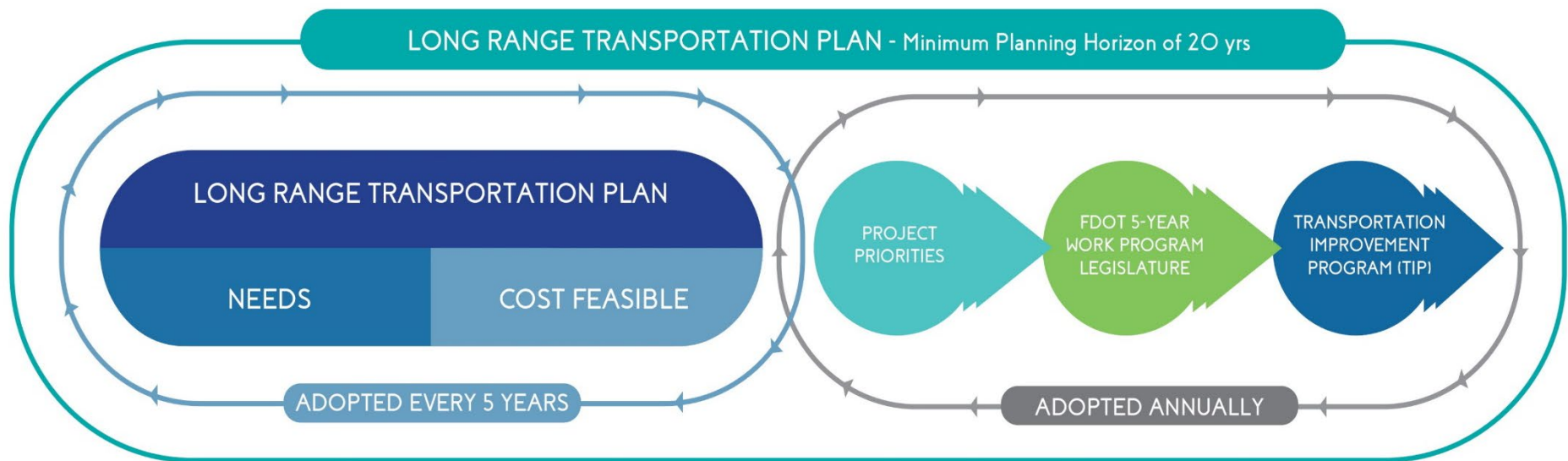
County Commissioners

5 seats - Bay County

City Commissioners/Mayors

5 seats - Panama City
2 seats - Panama City Beach
2 seats - Callaway
2 seats - Lynn Haven
1 seat - Mexico Beach
1 seat - Parker
1 seat - Springfield

TPO Planning Cycle



FIVE-YEAR CYCLE

(LRTP) LONG RANGE TRANSPORTATION PLAN

- NEEDS PLAN
- COST FEASIBLE PLAN

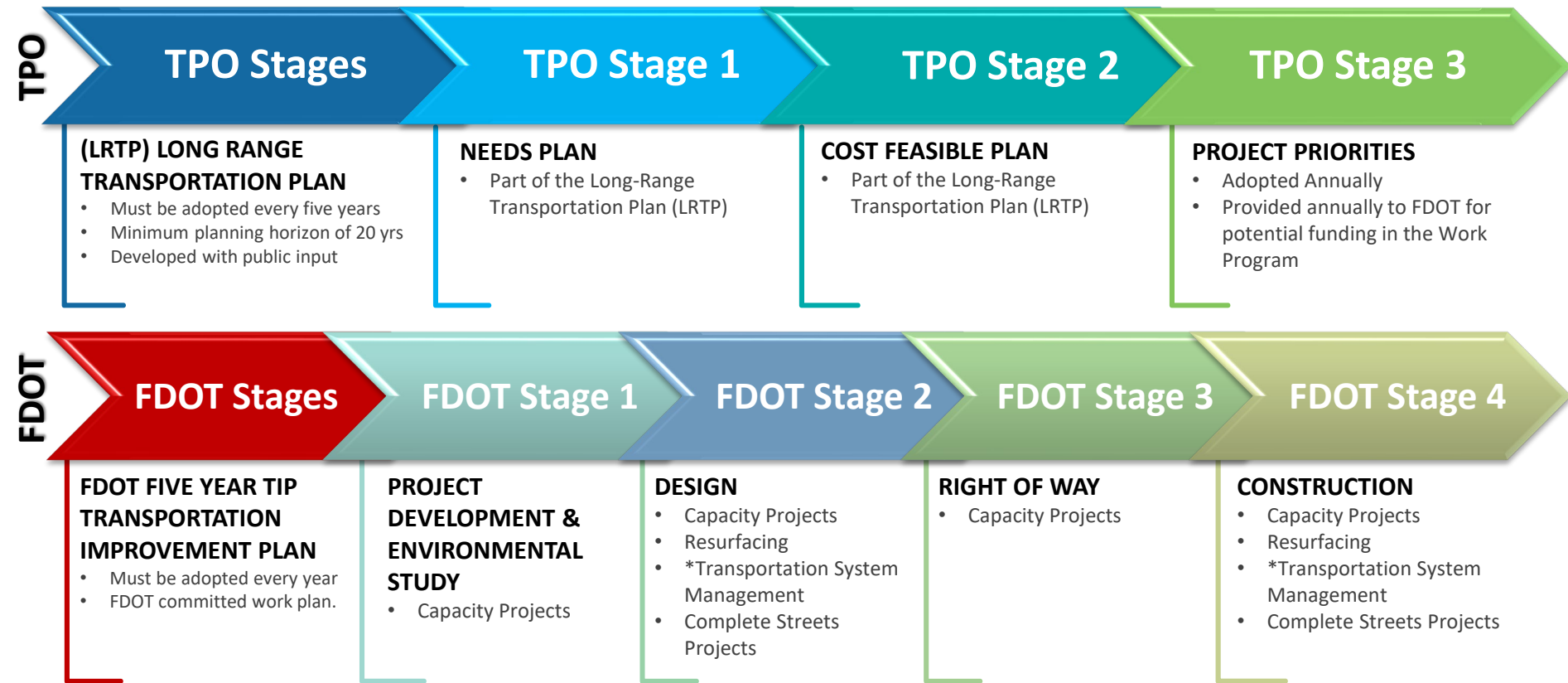
YEARLY CYCLE

PROJECT PRIORITIES

FDOT FIVE YEAR WORK PROGRAM

TRANSPORTATION IMPROVEMENT PROGRAM (TIP)

Transportation Planning Process



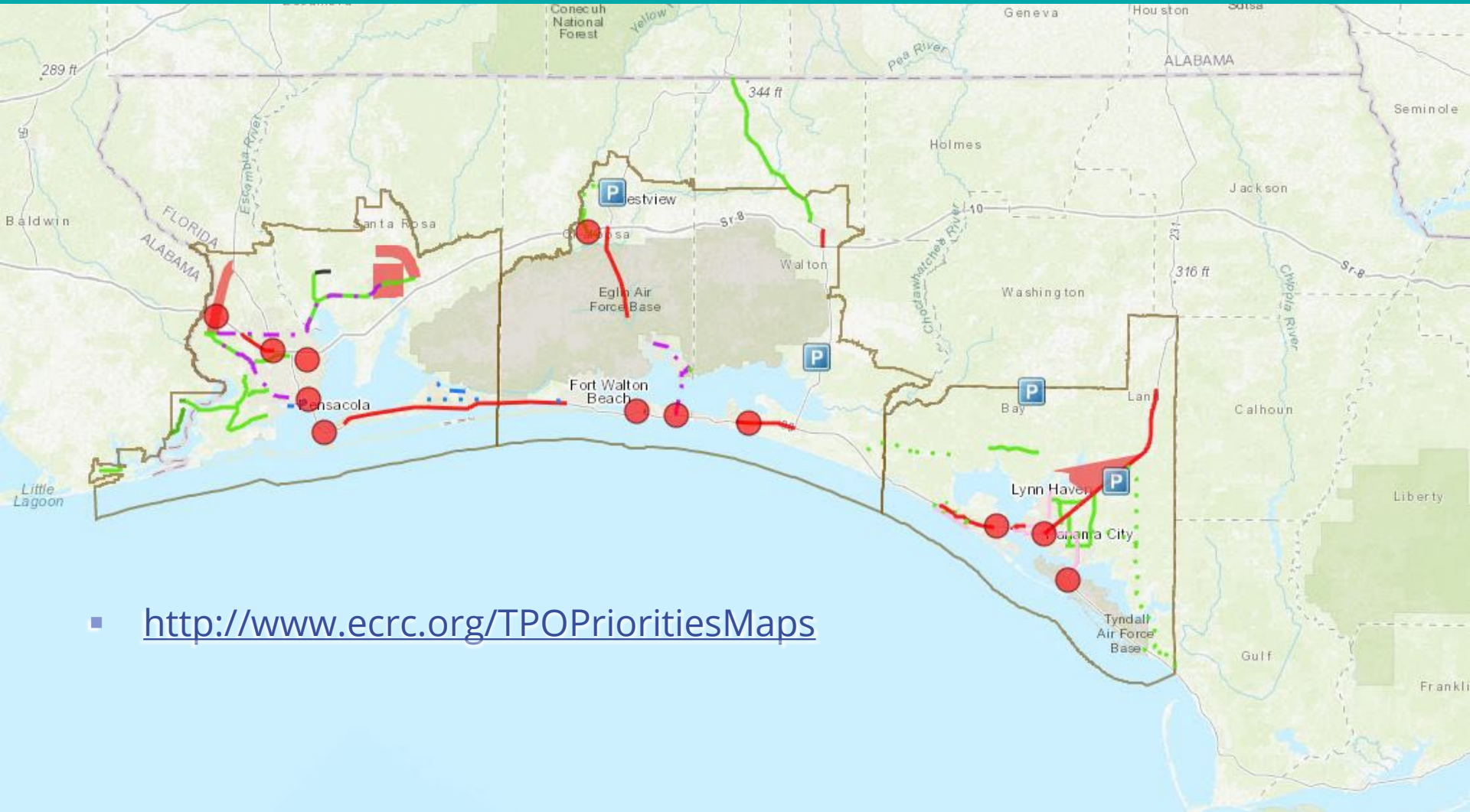
Long Range Transportation Plan (LRTP)

- **20-year Planning Horizon**
Updated every 5 years
- **LRTP (Long Range Transportation Plan)**
Updated every 5 years
- **Needs Plan and Cost Feasible Plan**
What are the needs?
What can we afford?
Wish List
- **Developed with Public Input**



Project Priorities

Project Priorities are a list of the Cost Feasible projects from the Long Range Transportation Plan in Priority order. They are provided to FDOT annually for funding in the Work Program.



- <http://www.ecrc.org/TPOPrioritiesMaps>

Transportation Improvement Program (TIP)

- Five-Year Plan updated annually that identifies projects funded in the FDOT Work Program

Click the TPO logo links below to view the TIP for each TPO.





Other TPO Products:

- Regional Freight
- Regional Intelligent Transportation Systems (ITS)
- Congestion Management
- Corridor Management

Other TPO Products:

- Bicycle / Pedestrian Plans
- Transportation Disadvantaged Plans
- Public Participation Process Plan



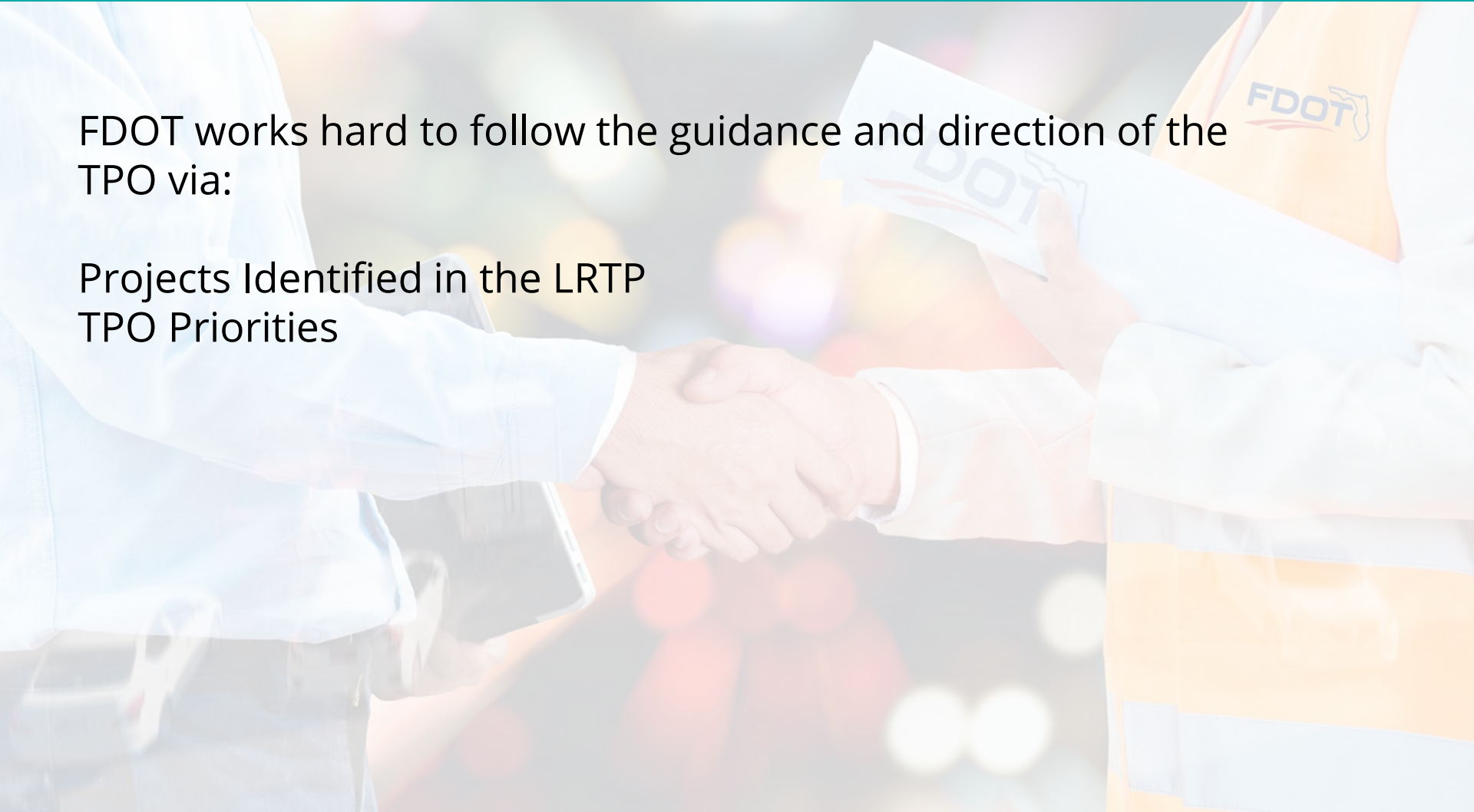
TPO Responsibility

The TPO is in partnership with FDOT



FDOT works hard to follow the guidance and direction of the TPO via:

Projects Identified in the LRTP
TPO Priorities



Summary

A TPO serves as the mechanism for
regional collaboration
in transportation decision making.

Thank you.